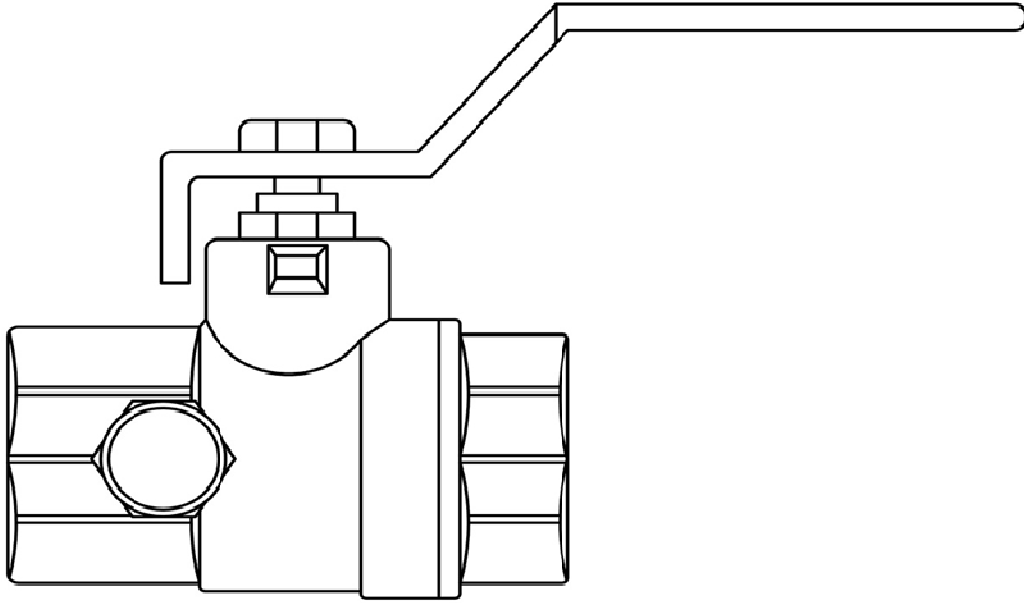


## Ball Valve (1/2" - 2")

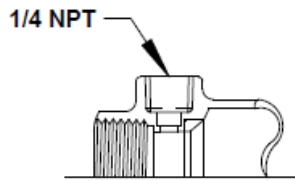
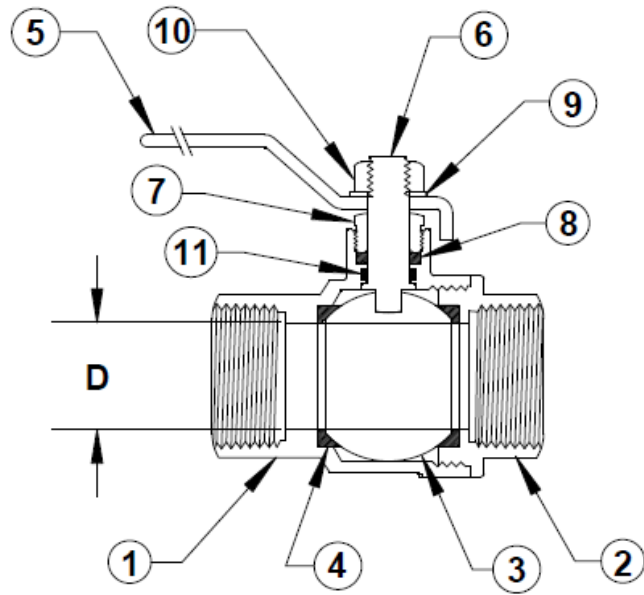
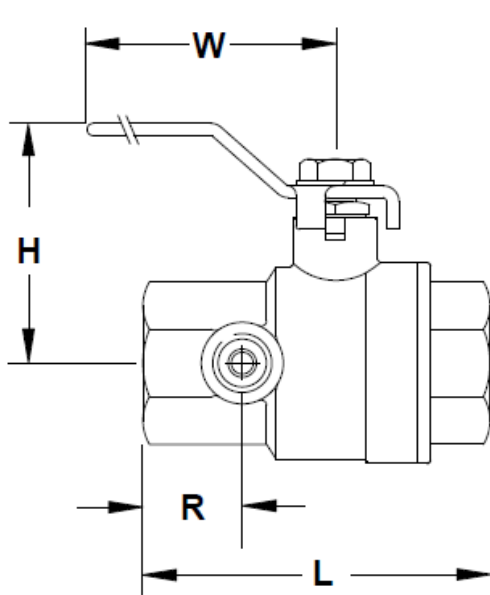


Ball Valve Manual Balance Valve

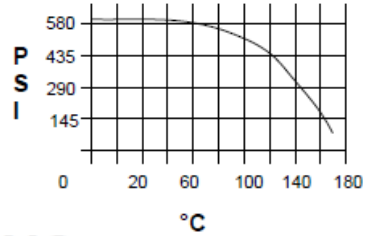
<b>Balance Type:</b>	Manual
<b>Body Design:</b>	Full Port Ball Valve w/PT <i>Memory Stop Optional</i>
<b>Body:</b>	Brass
<b>Ball:</b>	Chrome Plated Brass
<b>Stem</b>	Brass
<b>O-Rings:</b>	BUNA-N
<b>Stem Packing:</b>	PTFE
<b>Seat:</b>	PTFE
<b>Handle:</b>	Zinc Plated Steel w/ Plastic Coating
<b>Working Pressure:</b>	600 psig

**WARNING:** To insure proper installation this product must be installed in conformance with applicable building codes. Use of proper torque wrench is required.

# CR 1000 Series PT Port Forged Brass Ball Valve



PRESS. VS. TEMP. CURVE



## DIMENSIONS

CAT. NO.	SIZE	L	D	H	R	W
CR0501000	1/2	2.48	.59	1.89	.76	3.65
CR0751000	3/4	2.69	.75	2.11	.77	4.65
CR1001000	1	3.15	1.00	2.45	.84	4.65
CR1251000	1 1/4	3.65	1.25	2.53	.92	5.62
CR1501000	1 1/2	4.09	1.57	2.80	.94	5.62
CR2001000	2	4.47	1.97	3.13	.95	5.62

## MATERIAL LIST

NO.	PART NAME	MATERIAL
11	O-RING	BUNA-N
10	NUT	STEEL, ZINC PLATED
9	LOCK WASHER	STEEL, ZINC PLATED
8	STEM PACKING	PTFE
7	GLAND NUT	BRASS
6	STEM	BRASS
5	HANDLE	ZINC PLATED STEEL, PLASTICOATED
4	SEAT	PTFE
3	BALL	BRASS, HARD CHROME PLTD.
2	END CAP	BRASS
1	BODY	BRASS